

Engineered for liquid handling robots or multi-channel pipettes

## Checkit® Go

Verify robot or pipette accuracy in seconds.

### KEY BENEFITS

- > **ACCURATE:** Directly measures liquid volume. Limits evaporation.
- > **USE YOUR ACTUAL SAMPLE LIQUID:** Avoid viscosity and surface tension errors which are inherent when limited to testing with distilled water or a dye.
- > **FAST:** Done in under 10 seconds!
- > **CONVENIENT:** On-the-spot verification. Use in a well plate holder on the robot bed.
- > **COST-EFFECTIVE:** No capital equipment or training required. Saves time.
- > **INDIVIDUAL CERTIFICATION:** Every cartridge is certified for accuracy using NIST-traceable calibrated instrumentation.
- > **VALIDATION DOCUMENTATION:** The Checkit Recorder analyzes the dye levels and provides test reports.

**Need a routine, easy, instant, cost-effective validation for your robot? Use Checkit Go!**

### Instantly checks accuracy of liquid handling robots and multi-channel pipettes

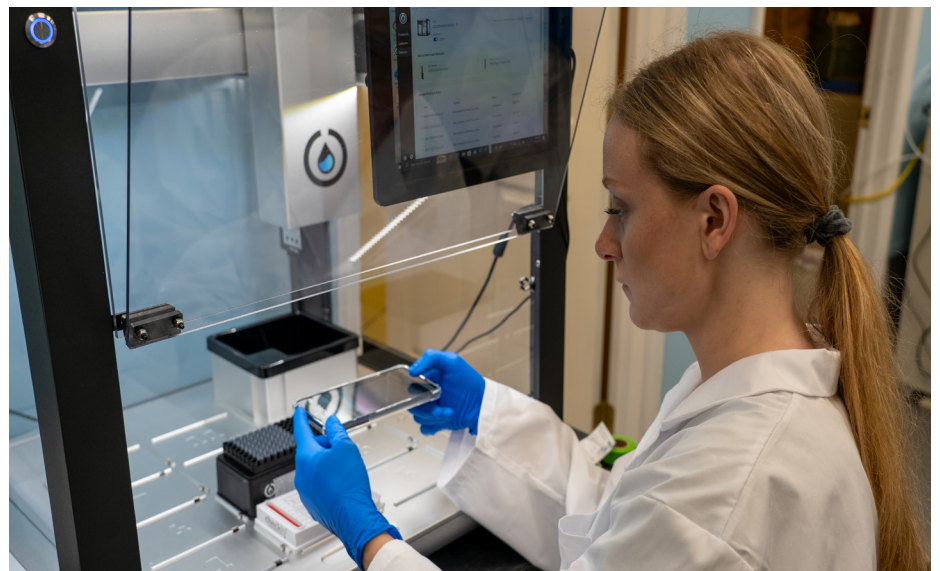
The Checkit Go is an easy-to-use, stand-alone, disposable cartridge. With it, you can check the accuracy of your liquid handling robots or multi-channel pipettes in just seconds. No additional equipment is required.

### Accurate - directly measures sample liquid volume

The Checkit Go directly measures the volume of the liquid dispensed, rather than indirectly measuring the weight or the color of the liquid. The glass capillaries almost completely encase the liquid, minimizing evaporation. Measurements are guaranteed to be accurate to within 2% and typically better than 1%.

### Calibrate and validate with your actual sample liquid

Validate your liquid handler with your actual test liquid, including glycerol, DMSO, and ethanol, by reconstituting your sample liquid in our red dye pellet.



*Routine validation of robotic liquid handlers is easy with the Checkit Recorder. The Checkit system is the easiest, quickest and most accurate way to verify up to 8 pipette channels in seconds. Use Checkit Go as your new standard for validating your pipettes and rest assured.*

**NEXT  
ADVANCE**

Innovative Lab Products for the Life Sciences

MK19-0122E

## USES

- > **ROUTINE MEASUREMENT:** Quickly and easily validate and document the accuracy of your robot or multi-channel pipette using your sample liquid.
- > **ALLEVIATE CONCERNS:** Is your robot still accurate. Was it mishandled? Just Checkit.

## MORE REASONS TO LOVE CHECKIT GO

- > **RELIABLE:** Dependable and repeatable measurements across different automated liquid handlers.
- > **PROVEN:** Based on the same technology as the Checkit Pro which has been used throughout the world since 2017.

**“Once in a while someone comes up with a product that makes you go “AHA!”. Checkit Go is one of those products. It’s magical in its simplicity and the speed at which you can verify your liquid handler is unlike anything else I’ve seen or used.”**

JEFF KENT, DYNAMIC DEVICES

## Fast & Convenient - verify up to 8 channels in seconds

This clever device measures the dispensed volumes of up to 8 channels simultaneously. It is the size of a well plate, so you can validate your liquid handlers by placing the cartridge directly on the plate holder of your liquid handler. You’re done in under 10 seconds.

## Easy to Use - no training required

Dispense the dye or your test liquid into the wells on the flip tab of the cartridge. Flip the tab or let the robot flip the tab. Then watch the dye travel up the 8 channels, simultaneously. Don’t blink or you’ll miss the fun! Then compare the level of the dye against the graduations. It’s that easy! You can even record the measurements with a simple photo or using the Checkit Recorder.

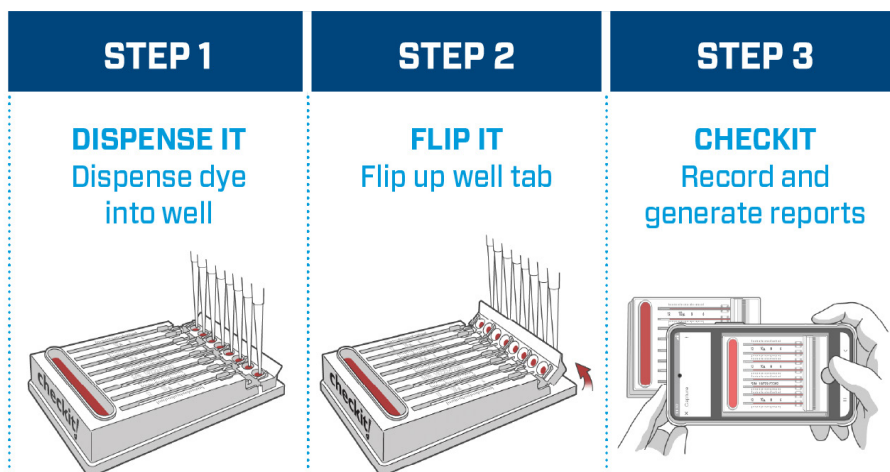
## Cost-effective

The Checkit Go does not require capital equipment or training. There is no startup cost. And it saves you time because it is so quick and there is no fussing with delicate balances or tedious colorimetric systems.

## Easy test documentation

With the Checkit Recorder, capture an image of the Checkit Go test, just as you would remotely deposit a check. The Checkit Recorder determines the volumes in each capillary and generates a report with complete statistical analysis for a single test or a series of repetitions, including Pass/Fail results if criteria are provided. The report can be downloaded and printed for record.

## IT DOESN'T GET ANY EASIER!



Operation consists of three simple steps, as illustrated above. 1. The robot dispenses the liquid into the wells on the flip tab. 2. Flip up the flip tab. The liquid will be drawn into the glass capillaries. 3. Determine the volumes using the graduations on the Checkit Go, or capture the test using the Checkit Recorder, which analyzes the image to determine the volumes, and provides a test report.

## FOR MORE INFORMATION, CONTACT

Next Advance, Inc.  
Tel. 1.518.674.3510  
info@nextadvance.com  
www.nextadvance.com