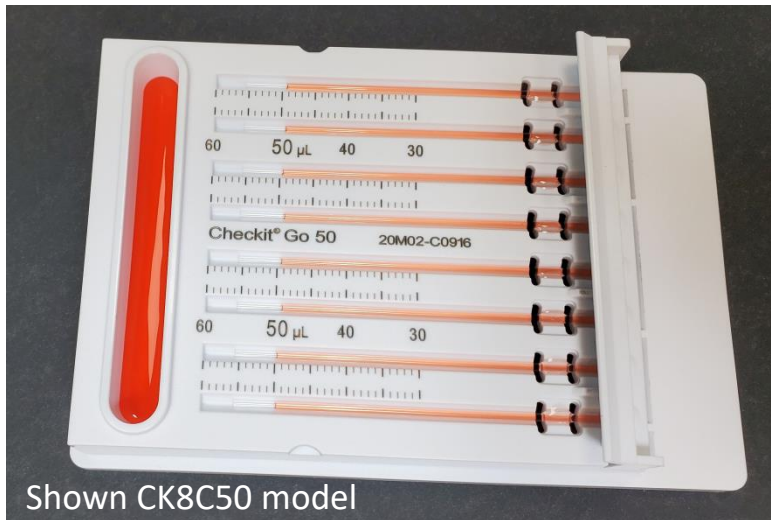


# Checkit<sup>®</sup> Go



Shown CK8C50 model

## Features:

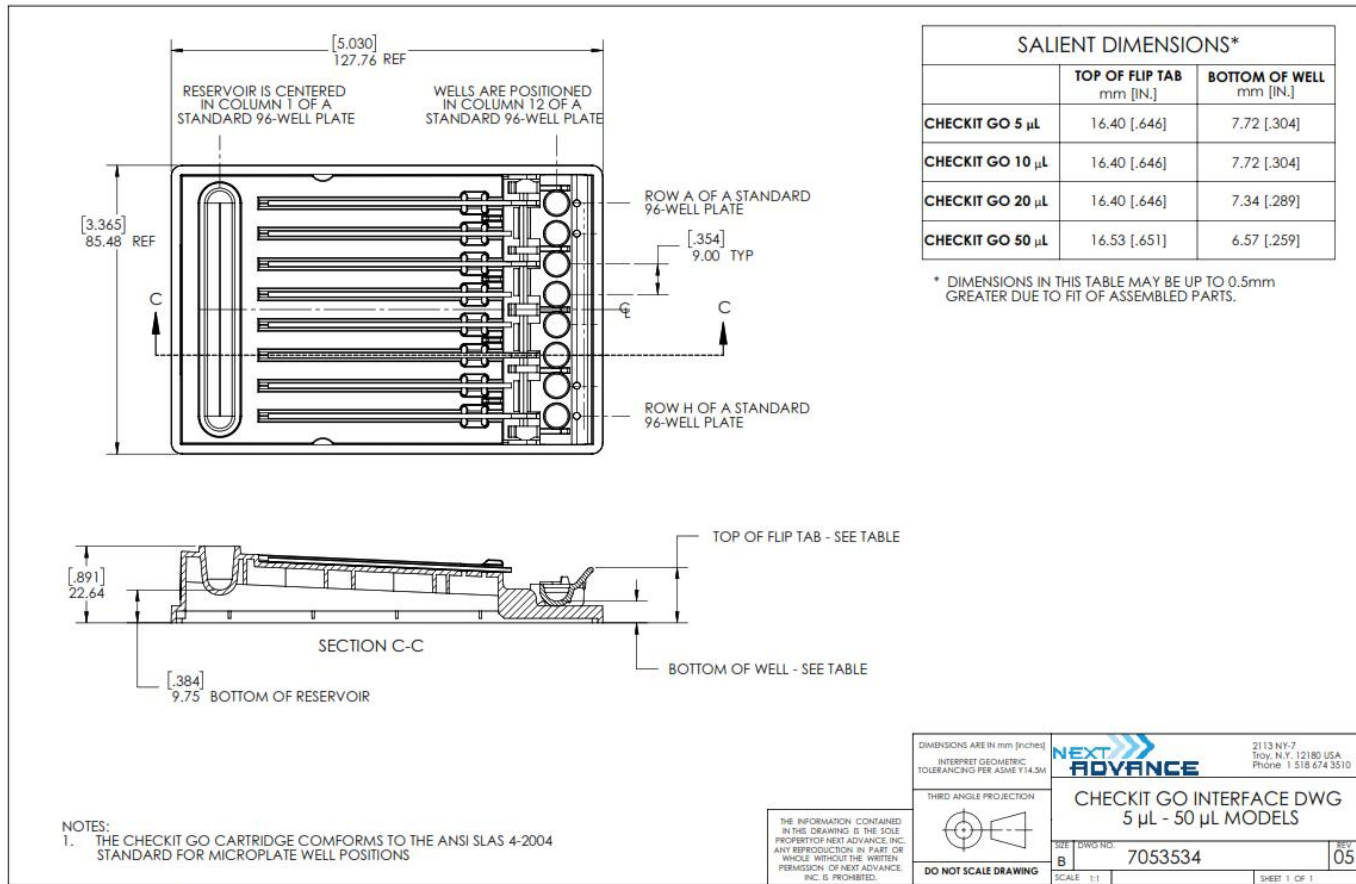
- Simple, user friendly operation
- Operates in 10 seconds or less
- Guaranteed accuracy is 2%; typically accuracy is 1% at nominal volume
- Can use a range of test solutions with dye pellets (available for purchase)
- Works with all liquid handler robots that use well plates, multi-channel pipettes, and electronic pipettes
- Compatible design for seamless programming in liquid handlers
- Easy to read markings on a white polystyrene cartridge
- Measures up to 8 channels simultaneously
- Dye is included with the cartridge  
(dye is non-toxic and acceptable for drain-disposal)
- Glass capillary tubes minimize evaporation of dye prior to reading results
- Enables validations between calibrations and for testing and calibrating with liquids representative of real samples



Next Advance, Inc., 2113 NY 7, Troy, NY 12180, USA  
Phone: (518) 674-3510 ; [info@nextadvance.com](mailto:info@nextadvance.com)  
[www.nextadvance.com](http://www.nextadvance.com)



## Dimensions:



## Volume range and markings:

Item #	Product Name	Min. Volume	Max. Volume	Major Tick	Minor Tick
CK8V5-6	Checkit Go 5uL	2 $\mu$ L	6 $\mu$ L	0.5 $\mu$ L	0.1 $\mu$ L
CK8J10-6	Checkit Go 10uL	4 $\mu$ L	12 $\mu$ L	1 $\mu$ L	0.2 $\mu$ L
CK8K20-6	Checkit Go 20uL	8 $\mu$ L	22 $\mu$ L	1 $\mu$ L	0.2 $\mu$ L
CK8C50-6	Checkit Go 50uL	20 $\mu$ L	55 $\mu$ L	5 $\mu$ L	1 $\mu$ L

## Solvent compatibility:

Model #	Product Name	Up to 80% DMSO	Up to 80% Ethanol	Up to 80% Glycerol
CK8V5-6	Checkit Go 5uL	✓	✓	✓
CK8J10-6	Checkit Go 10uL	✓	✓	✓
CK8K20-6	Checkit Go 20uL	✓	✓	✓
CK8C50-6	Checkit Go 50uL	✓	✓	✓



Next Advance, Inc., 2113 NY 7, Troy, NY 12180, USA  
 Phone: (518) 674-3510 ; [info@nextadvance.com](mailto:info@nextadvance.com)  
[www.nextadvance.com](http://www.nextadvance.com)

**NEXT ADVANCE**  
 Innovative Lab Products for the Life Sciences  
 MK19-0141D