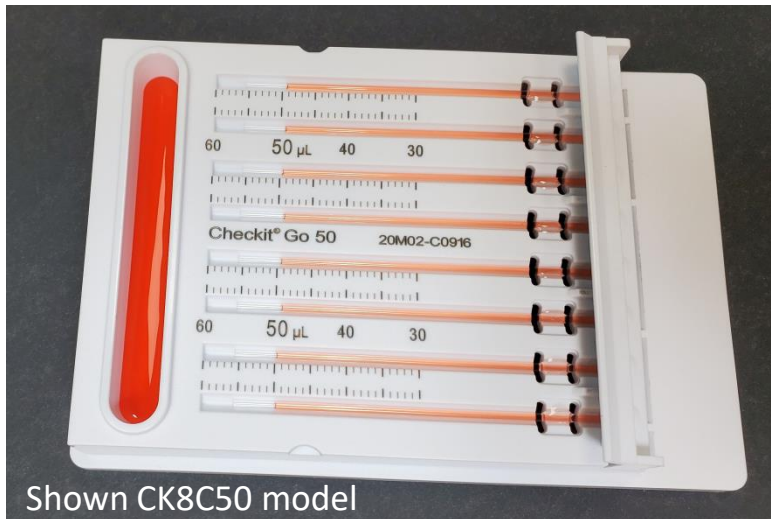


Checkit[®] Go



Shown CK8C50 model

Features:

- Simple, user friendly operation
- Operates in 10 seconds or less
- Guaranteed accuracy is 2% from 50% to 100% nominal volume; typically accuracy is 1% at nominal volume
- Can use a range of test solutions with dye pellets (available for purchase)
- Works with all liquid handler robots that use well plates, multi-channel pipettes, and electronic pipettes
- Compatible design for seamless programming in liquid handlers
- Easy to read markings on a white polystyrene cartridge
- Measures up to 8 channels simultaneously
- Dye is included with the cartridge
(dye is non-toxic and acceptable for drain-disposal)
- Glass capillary tubes minimize evaporation of dye prior to reading results
- Enables validations between calibrations and for testing and calibrating with liquids representative of real samples

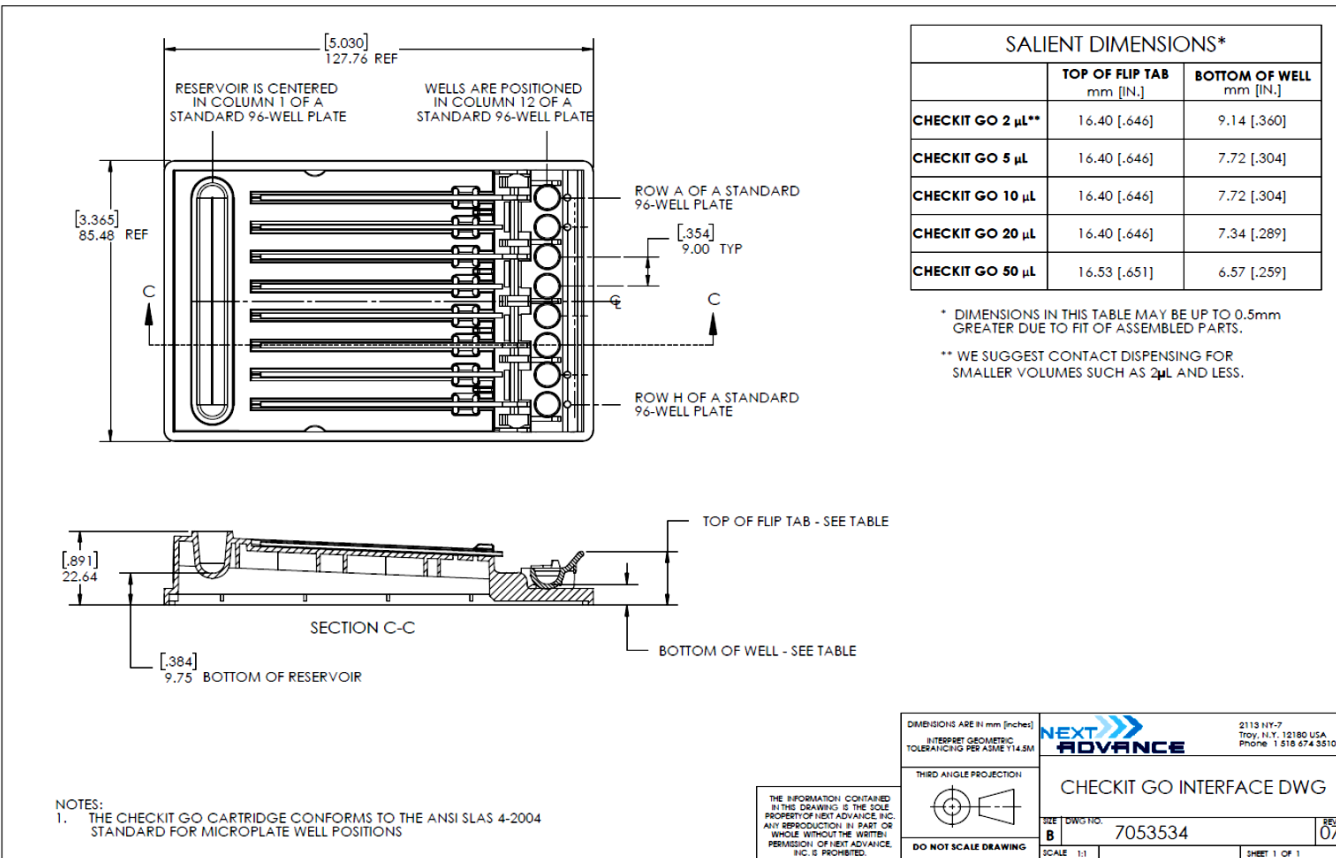


Next Advance, Inc., 2113 NY 7, Troy, NY 12180, USA
Phone: (518) 674-3510 ; info@nextadvance.com
www.nextadvance.com



MK19-0141E

Dimensions:



Graduations:

Item #	Product Name	Minimum	Maximum	Major Tick	Minor Tick
CK802-6	Checkit Go 2uL	0.8 μ L	2.5 μ L	0.1 μ L	0.05 μ L
CK8V5-6	Checkit Go 5uL	2 μ L	6 μ L	0.5 μ L	0.1 μ L
CK8J10-6	Checkit Go 10uL	4 μ L	12 μ L	1 μ L	0.2 μ L
CK8K20-6	Checkit Go 20uL	8 μ L	22 μ L	1 μ L	0.2 μ L
CK8C50-6	Checkit Go 50uL	20 μ L	55 μ L	5 μ L	1 μ L

Solvent compatibility:

Model #	Product Name	Up to 80% DMSO	Up to 80% Ethanol	Up to 80% Glycerol
CK8V5-6	Checkit Go 5uL	✓	✓	✓
CK8J10-6	Checkit Go 10uL	✓	✓	✓
CK8K20-6	Checkit Go 20uL	✓	✓	✓
CK8C50-6	Checkit Go 50uL	✓	✓	✓



Next Advance, Inc., 2113 NY 7, Troy, NY 12180, USA
Phone: (518) 674-3510 ; info@nextadvance.com
www.nextadvance.com

NEXT ADVANCE
Innovative Lab Products for the Life Sciences
MK19-0141E